

In this Edition

Editor's Comments

Cow Byre Publicity

Shows Calendar:

**Cow Byre, Ruislip
11th Nov, to 16t Nov.**

Reports:

**Peter Leach &
Gordon Cookson**

Library news

The Display Table

Workshop Evenings

Gallery:

**Items from the Instant
Gallery at the AWGB
Seminar**

Diary Dates



Editor's Comments

Next month will be the AGM for 2013. AGMs are usually thought of a rather boring, but they are important. Not only are the Club's workings for the year presented, but also the Officers and Committee members are appointed. We have a great group of volunteers who help with club nights and at shows, but we also need to ensure the future of our club. The best way to do this is by serving on the committee with the officers to ensure continuity in the coming years.

Serving as a committee member does not take hours of your life, except perhaps at shows, but it does require a commitment. Every committee needs regular injections of new thinking to keep its planning fresh and up to date. There will be vacancies for committee members at this year's AGM, so we invite those of you who care about our Club to come forward and seek nomination as committee members. Nomination forms are being circulated. Please find a sponsor, and ensure that your nomination reaches the Secretary by October 30th. at the latest.

Alan

President: Stuart King

Chairman: Tony Champion

Secretary: Mary Morgan.
30 Stirling Close, Windsor, Berkshire.
SL4 4PW Tel: 01753 867921
marymorgan3@sky.com

**Treasurer & Membership
Secretary:** Derek Pollecutt

Committee members:

Ralph Pooley Peter Phelps
Cliff Coleman Eddie Morgan
Mike Mansfield

Newsletter Editor: Alan Spargo
73 Park Lane, Harefield, Middx.
UB9 6BL Tel. 01895 823159
Alan@al2783hare.plus.com

Cow Byre Publicity

One of our problems has been the difficulty of publicising our shows. Every now and then concerned members offer advice, for which we are always grateful, but in fact all the suggestions we have received, plus a few more, have been tried often over many years. From time to time we have asked people who attend our shows how they heard of us, and very few indeed have responded to leafleting, posters in shops and libraries, entries in local newspapers, and announcements on local radio. What really gets people to come to see our shows is personal recommendation. We always have available leaflets detailing our show dates and Club details, which we encourage people to pass on to their friends, and for October we have included an A5 poster with this newsletter in the hope that you, the members, will use it to invite friends and neighbours to come and see what we have on offer. If anyone wants extra mini posters please speak to the Editor, who will print some more, and send them to you. I should add that publicity for Craft Fairs, County Shows, and the Art Show in the Great Barn is in the hands of others, not MWA.

Peter Leach & Gordon Cookson

It is always a pleasure to welcome our own members as demonstrators. In September, Peter Leach and Gordon Cookson shared the demonstration evening.

Peter took the first part of the evening. Peter is a man of many skills, who regularly shows beautifully made items on the competition table. Peter is fascinated by Stick work, which is the basis of much prized Tunbridge Ware. At first glance, Peter's stick ware inlays in his boxes can be mistaken for marquetry, but a peep inside the boxes reveals that the patterns are assemblies of solid wood, and not just veneers on the surface of the lid. For interest, a photo of the lid of a genuine Tunbridge Ware box is shown here.



Peter had prepared well for his demonstration. He had cut and assembled a bundle of sticks of



contrasting timbers, all cut across the grain, and held temporarily by rubber bands, as well as a fully glued bundle.

He also had ready some large scale "sticks" to show how they were shaped and fitted together. They called for very precise cutting, done on a small table saw, followed by some nifty sanding. This part of the preparation is a long winded affair, followed by careful assembly and gluing up with PVA glue. Stronger resin glues could be used, but would be hard on the edges of turning tools, which have to be very sharp to minimise tear-out. Peter made a small box, showing how he fitted the stick ware, and revealed its pattern both inside and outside the lid. Most of this was basic turning skills, but creating the slices of stick ware for the inserts called for very accurate centring of the bundle of sticks, and careful turning of its outside so as not to cut into the pattern. Slices were parted off the bundle, using a thin parting tool to minimise waste of valuable material. A bundle is about 100 mm long, so it will produce many thin slices for turned boxes. Sharp tools are needed to finish the faces of the slices of sticks, as it is necessary to minimise the need for sanding, because sanding the surfaces of mixed timbers assemblies often causes contamination of the lighter coloured woods by dust from the darker woods. Peter did not have enough time to fully finish his box, but he did complete all the stages in its production. It was an excellent and well presented demonstration.

Gordon is well known for his fascination with

using waste materials. Various large items made from such things as very worm eaten wood, chipboard, wafer board, etc. typically described under the heading of "skip-wood". Terrible stuff to turn. Dusty, and murderous to cutting edges, but in Gordon's hands capable of forming presentable turned work.



Gordon's demonstration was entitled "Something from a Bowl". Most people when making smallish bowls simply waste the greater part of the blank as they turn out the interior. Not Gordon! He uses the core wood to make useful small items of the kind that often appeal at craft fairs. By partially turning out the interior of a bowl, he had enough left to produce a bangle, which he proceeded to make. But he didn't waste the core of the bangle. By careful tooling he left that in place, and used it to make wooden pendants! He was able to finish most of the front of the pendant in situ before removing it with a thin parting tool. To finish the pendant, he needed an eccentric chucking device. This he made by using wooden jaws attached to just two jaws of a four jaw chuck. The embryo pendant and the chuck were carefully marked to enable the blank to be reversed without losing alignment, and so the pendant was completed. The photo shows the eccentric chuck in use. After all this, Gordon still had his bowl blank,



having usefully used what most of us simply throw away. This was a fascinating demonstration of thrift, and an enjoyable change from simply making masses of shavings in the

shortest possible time. Our two demonstrators are to be congratulated on an excellent show.

Library News

Gordon is reducing his stock by selling off some of his older books and videotapes. (Rumour has it that his box is now so heavy that it is stalling the lift!) Useful reductions of some of his prices have been made, so it would be worth while to take a look at what is on offer. He asks you to continue to bring in unwanted copies of woodworking and wood turning magazines for resale, as these contribute a useful income with which he buys new DVDs and books, and of course, please keep on borrowing!

The Display Table

May we remind everybody that should you wish to simply display your latest piece, and to invite comment upon it, you do not have to enter for the annual best of year competition. The Display Table is as much a Gallery as it is a means of competing with other turners. Since the Club has been running the Competition Table, the standard of work has improved a great deal. Judges are finding it increasingly difficult to assess the entries, and are having to apply more and more stringent criteria, so please do not be too downhearted if your finely made piece does not achieve top marks. Keep on pushing the standards upwards! Our displays at shows and exhibitions are now of splendid quality, and compare very favourably with other offerings elsewhere.

Workshop Evenings.

The most recent workshop evening was divided into three parts. Two lathes were devoted to turning techniques for the insides and the outsides of bowls respectively. This meant that no finished bowls were made, but members could take away their efforts for completion in their own workshops. The third lathe was given over to making captive rings, and was the subject of much interest during the evening. The technique seems to be something of a mystery to many new turners, so we were glad to be able to show various methods of making the rings. All it requires really is patience and a little bit of ingenuity in detaching the ring, while maintaining its circular cross section. It can be done, and there are now tools available that make it much easier than it once was by improvised methods. We would ask members, especially novice turners, to tell us of any turning techniques which they have found difficult, so that we can lay on workshops with expert turners on hand to unravel the mysteries. Do not be reluctant to bring in any problem pieces which you have so that we can bring expert advice to bear upon them.

Diary Dates

October 10th Steve Heeley

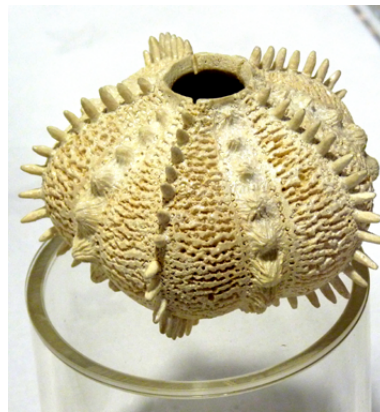
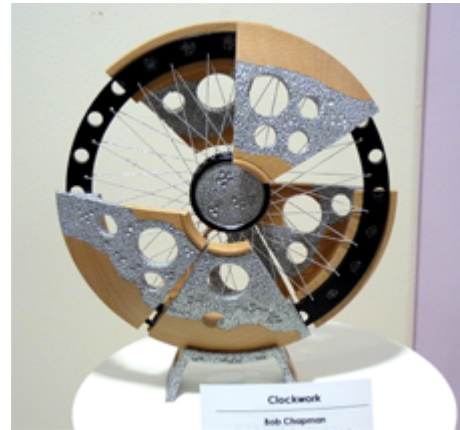
November 14th AGM "Plus"

December 12th Christmas Party

Live Crafts for Christmas. White Waltham Airfield 20th, 30th Nov. & 1st Dec.

Cow Byre, Ruislip 11th to 16th November.

GALLERY



Work shown is from the AWGB Seminar Instant Gallery.